

## SPECIFICATION

### Scanner Performance

Laser Pulse Repetition Rate (PRR)	600kHz	400kHz	300kHz
Max.Measuring Range@ ρ > 20% <sup>1)</sup>	250	350	450
Max.Measuring Range@ ρ > 80% <sup>1)</sup>	300	450	600
Typ. flying height	120m	200m	250m
Measurement rate	max.800,000 pts/sec		
Scanning FOV	up to 360° <sup>2)</sup>		
Max. Number of return pulses Max.	12		
Measuring Range, natural targets ρ > 80%	1000m		
Measuring accuracy <sup>3)</sup>	10 mm (single)/ 5 mm (repeat)		
Laser safety class	Class 1 (IEC 60825-1:2014) eye-safe		
Laser wavelength	1550nm		

### IMU & GNSS

IMU Accuracy	0.006° Roll/ Pitch 0.019° Heading
IMU update rate	500HZ
Position Accuracy	0.01m horizontal 0.02m vertical

### General

Absolute accuracy	±3cm (H/V) <sup>4)</sup>
Storage	256 G Flash Drive
Dimensions	234mm x 112mm x 120mm (without camera)
Weight	2kg
Working temperature	-20°~ +55°
IP rating	IP64
Power consumption	40W

### RGB Camera

Resolution	45/61MP
Focal length	18mm
Sensor size	36*24 mm(8192*5460)
Pixel size	4.4um
FOV	90°
200 meters high resolution	4.9cm

1)Typical values for average conditions.

2)Selectable. Consider limitations when integrated in kinematic systems

3)Accuracy is the degree of conformity of a measured quantity to its actual (true) value.

4)According to SOUTH test condition :150 m AGL with 8m/s speed.



## Powerful & Lightweight

**SG130 is a multi-platform LiDAR system that combines high-resolution laser scanning and precise positional data to collect geo-referenced point cloud, which is particularly designed for geospatial survey scanning from air to ground.**

## Introduce

SG130 is a new generation of multi-platform LiDAR launched by South Surveying & Mapping. It has a smaller volume and lighter weight. With a measurement range of 900 meters, it can easily handle large-scale mapping tasks in complex scenarios. The cable-free design and integrated slider design allow for quick switching between multiple platforms such as unmanned aerial vehicles and vehicles.

## Advantages



### Multi-platform

With this LiDAR solution, more mission scenarios can be completed. Based on a 360-degree field of view and lightweight design, it can be easily installed on various drone platforms or vehicles.



### Penetrability

Its detection and processing of multiple target echoes per laser pulse will provide you with effective ground points.

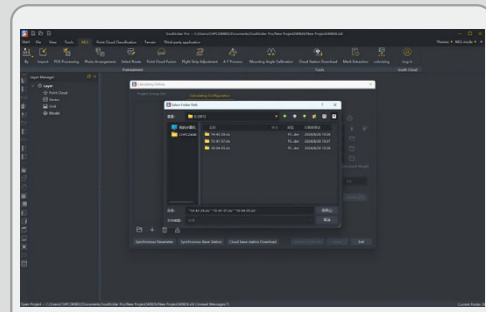


### High accuracy

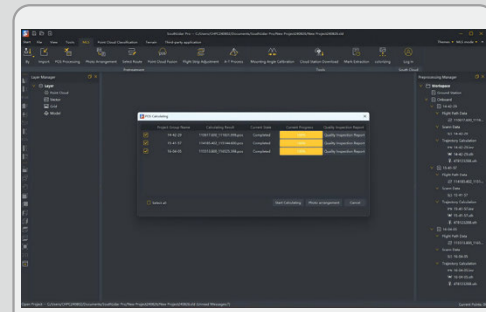
The high-precision integrated navigation algorithm combined with the scanner that can provide 5 mm repeated ranging accuracy can achieve an absolute accuracy within 5 cm.

## Software

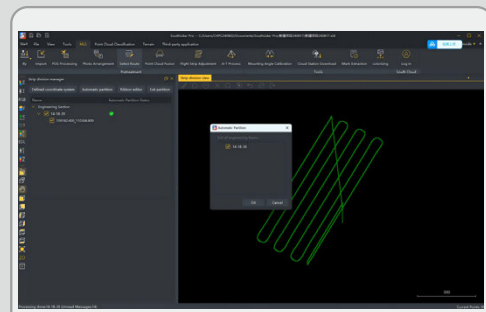
AcuteLas studio is capable to process terrestrial scanner data, aerial lidar data, and it can process data in batches, that means several groups data can be imported at the same time and process together.



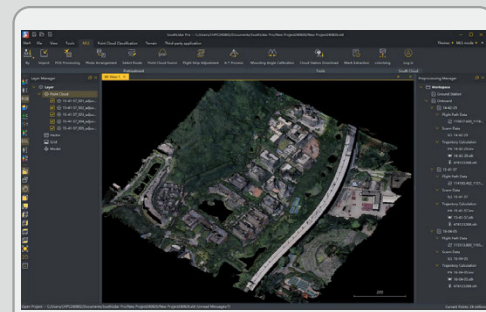
Import several flights data



Several flights POS data processing

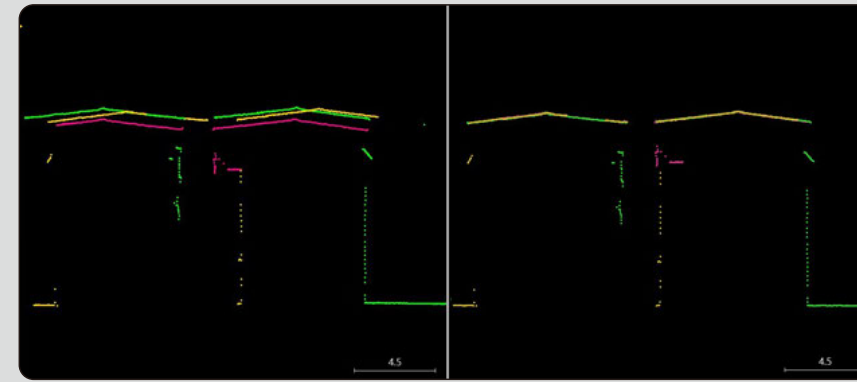


Flight strips division



Serval flight data fusion

## Point cloud optimization

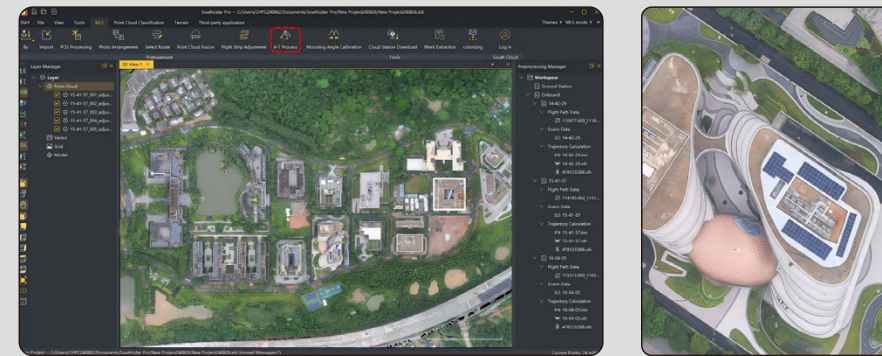


Before

After

Refine laser, navigation and orientation data to obtain seamless point cloud, with or without GCPs

## Orthophoto generation



While processing point cloud data, orthophotos can be generated.

## Platform



SOUTH Quadcopter SF1200

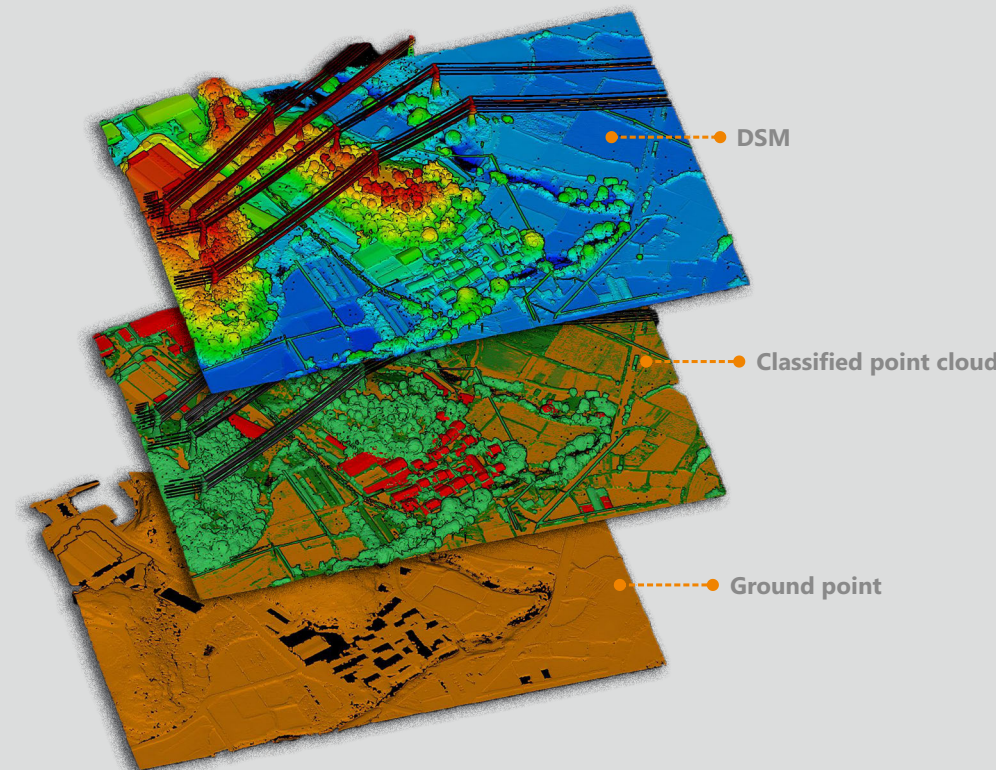


SOUTH VTOL UAV

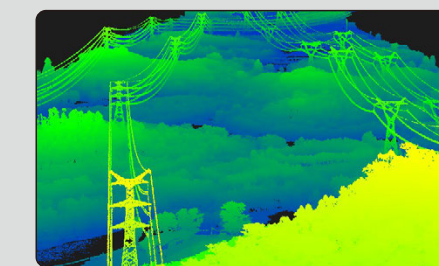


DJI M300/M350/M400 RTK

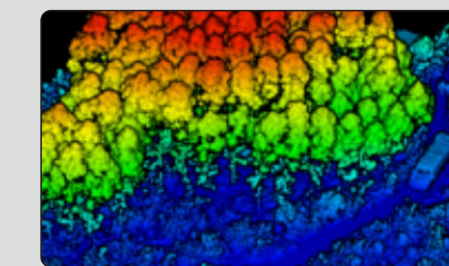
## Point cloud classification



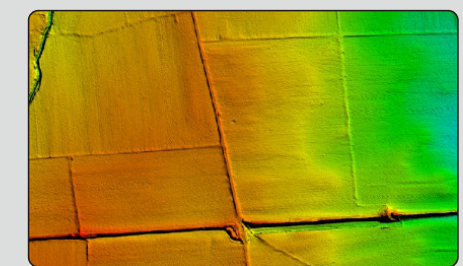
## Applications



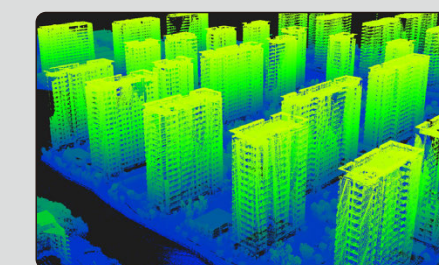
Energy & Utilities



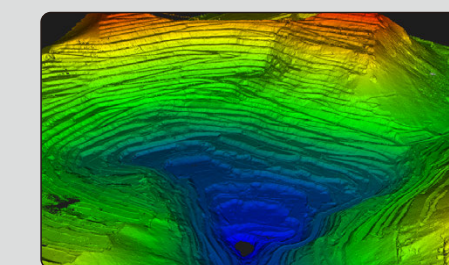
Forestry



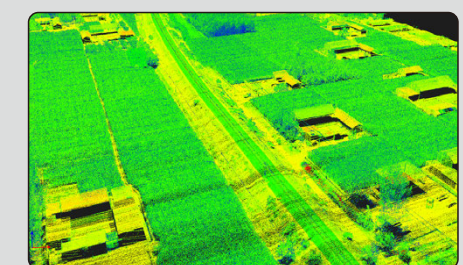
Archeology



Construction & Engineering



Mine



Railway