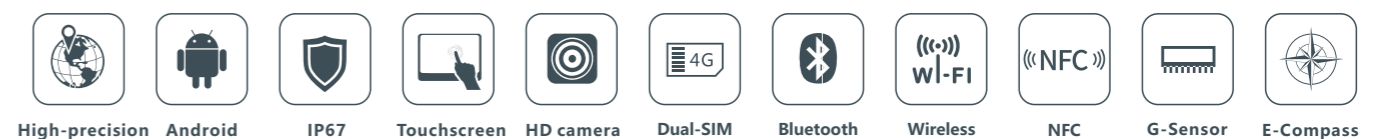


SPECIFICATIONS

		N80		N80T
System	Operating System	Android 6.0	Android 8.1	Android 8.1
	CPU	Octa-Core 1.5GHz	Octa-Core 2.0GHz	Octa-Core 2.0GHz
	RAM	3GB	6GB	6GB
	ROM	64G	128G	128G
	Storage	Up to 128G extensible		
GNSS	Single positioning	3m		
	SBAS	1-3m		
	DGNSS	1m (CEP)	0.5m (CEP)	
	RTK	/	0.05+1ppm (CEP)	
	Satellite	GPS L1, GLONASS L1, BDS B1	GPS L1 L2, GLONASS L1 L2, Galileo E1 E5, BDS B1 B2	
Differential format	RTD	RTCM32, RTCM30		
Communication	GSM modem	TD-LTE/FDD-LTE 4G network modem, downward compatible with WCDMA/TD-SCDMA 3G and GSM/EVDO 2G network		
	Bluetooth	Bluetoothv2.1+EDR/V3.0+HS/V4.1		
	WIFI	Wi-Fi IEEE802.11 a/b/g/n 2.4G/5G		
	USB	USB-TypeC, supports OTG		
	Camera	13 megapixel AF rear camera, flashlight, 5 megapixel front camera		
Multimedia	Display	8 inch 800*1280 TFT		
	Card slot	SIM slot x2 TF slot x1		
	Sensors	Gravity sensor, light sensor, electronic compass, atmospheric pressure sensor	Gravity sensor, light sensor, electronic compass, atmospheric pressure sensor, gyro sensor, gravity 3 axis acceleration sensor, distance sensor(optional)	
	Others	Integrated speakers and microphone		
Extensions	Support NFC, customize bar code and infrared scanning			
Electrical	Battery	3.8V 8200mAh Removable		
	Battery life	>10h typically		
Environment	Waterproof/ Dustproof	IP67		
	Shockproof	Withstand drop from 1.2m to concrete		
	Work temp	-20°C — +60°C		
	Storage temp	-40°C — +80°C		
Physical	Dimension	258*147*15mm		
	Weight	520g		

SOUTH
Target your success

N80 series
— Industrial Rugged Tablet —



SOUTH
Target your success

SOUTH PRECISION INSTRUMENT PVT. LTD.

Add: 1111,11th Floor, RG Trade Tower, Plot No.B-7 Netaji Subhash Place,
Pitampura, Delhi-110034 Tel: 011-49995999, Mob:+91-999999255
www.southprecision.in

CUSTOMER SERVICE SUPPORT: AHMEDABAD CHENNAI HYDERABAD INDORE KOLKATA MUMBAI



Key Features

N80 series tablet are the industrial rugged GNSS collection terminal which integrated with high precision GNSS board, high sensitive antenna, 4G network modem, WiFi and dual mode Bluetooth modem, leads the portable high precision tablet in the field of large-size screen mapping.

In the form of the ubiquitous, internet is penetrating and fusion in all corners of surveying technology, and setting off an unprecedented reconstruction and transformation. In the rapidly development information age, data sharing is an inevitable trend, N80 can meet the needs of mapping and GIS industry with the high speed communication modem.



Precise positioning

In-built high precision GNSS board and high sensitive antenna, and use the algorithm of single frequency of RTK, combine with differential positioning technology, the accuracy of position is able to be improved to centimeter level.

4G network

Equipped with TD-LTE/FDD-LTE 4G network communication modem, ensures unobstructed data interaction

High-configurations

Android 6.0, up to Android 8.1
Octa-core 2.0GHz CPU
6GB RAM
128GB ROM

HD camera

5 megapixel front camera and 13 megapixel HD AF rear camera, support flashlight

Extended functions

Supports NFC, customize bar code and infrared scanning,

Large size display

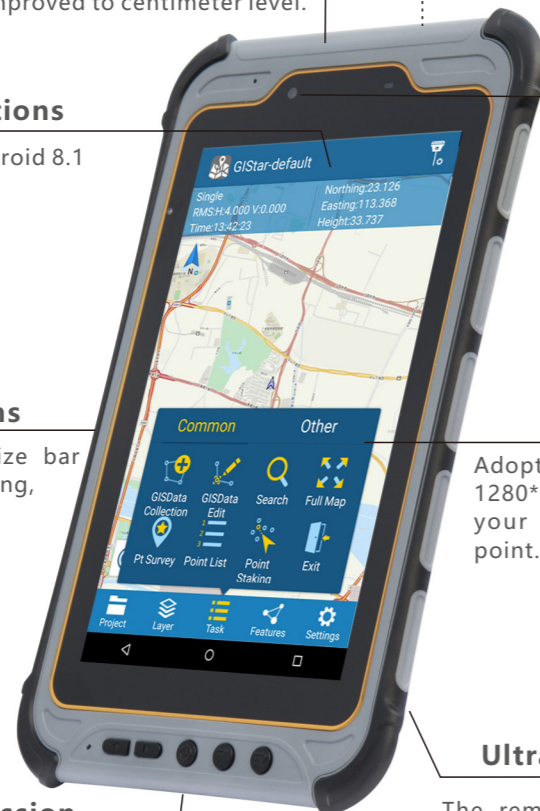
Adopts 8 inch HD screen with 1280*800 resolution, ensures your sight clearly on each point.

High-speed transmission

Adopts the most popular and advanced USB-TypeC interface, make sure the availability and efficiency of data transmission.

Ultra-long life battery

The removable Li-ion battery with 8200mAh capacity can last over 10 hours continuous work.



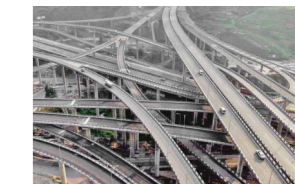
Application Fields

Land & Agriculture: Land use change survey, Illegal land use monitoring, Geographic monitoring, Land approval survey

Electricity industry: GIS data collection, Wire line safety inspection, Electrical equipments maintenance, Pylon position site survey and design

Fuel gas industry: Gas pipe network data collection, Pipe network safety inspection, Key equipment positioning

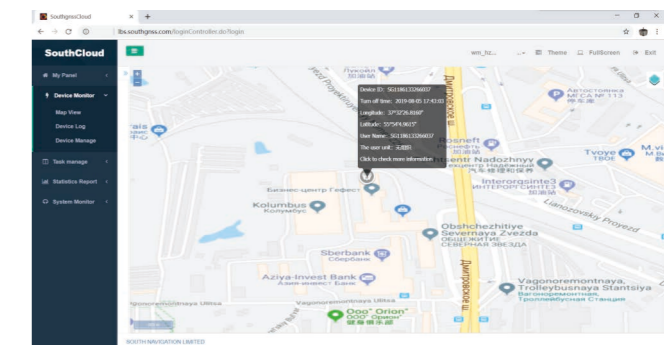
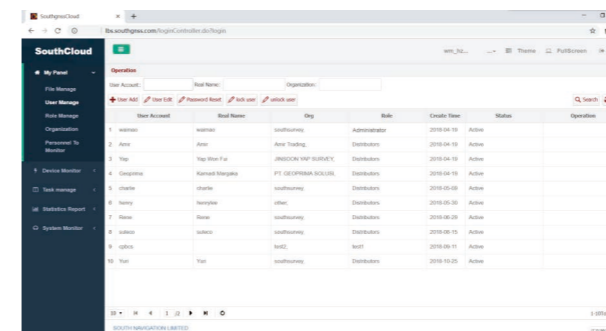
Transportation field: Intelligent Transportation System establish, Intelligent Transportation travel guidance



Intelligent Cloud Platform

N80 series GNSS tablet supports SOUTH intelligent cloud platform to implement file sharing, data backup, equipment track upload real-time, and cloud storage. 24 hours remote control devices, provide a solution in time while customer needs.

SOUTH cloud platform is with the core of location, track and cloud storage that to help you enjoy cloud management of devices. The real-time position uploading let you know how is the status of devices like the palm of one's hand wherever are the devices, truly realize device management and monitoring. At the mean time, SOUTH cloud platform allows you to remote control devices by changing working mode and upgrading firmware. Relying on track recording function, the platform is able to let you check the history track of devices that give you a different experience of knowing where has device been to. The cloud storage feature enables the data to synchronize to cloud in real-time any where and any time, perfectly ensures the security of important data, so that you can download the data wherever you are when you need.



Combination Sets

N80 series tablet is able to work with a lot of devices such as connecting with RTK products, and connecting to a high-sensitive external GNSS antenna.

